

ORACLE WITH 20:20 FORESIGHT

FUSING I.T. WITH BUSINESS STRATEGIES

CO-PRESENTERS



PLATINUM PARTNERS



GOLD PARTNERS

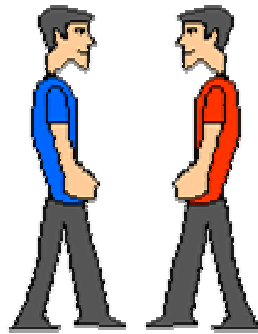


Active Directory Integration – OID & AD in Harmony

Ray Tindall – SAGE Computing Services



Active Directory Integration



“OID & AD in Harmony?”

SAGE Computing Services

Customised Oracle Training Workshops and Consulting

www.sagecomputing.com.au

Ray Tindall – Senior Systems Consultant

www.sagecomputing.com.au



Who



Department
Government

Morrison Road

What

OID – AD Integration

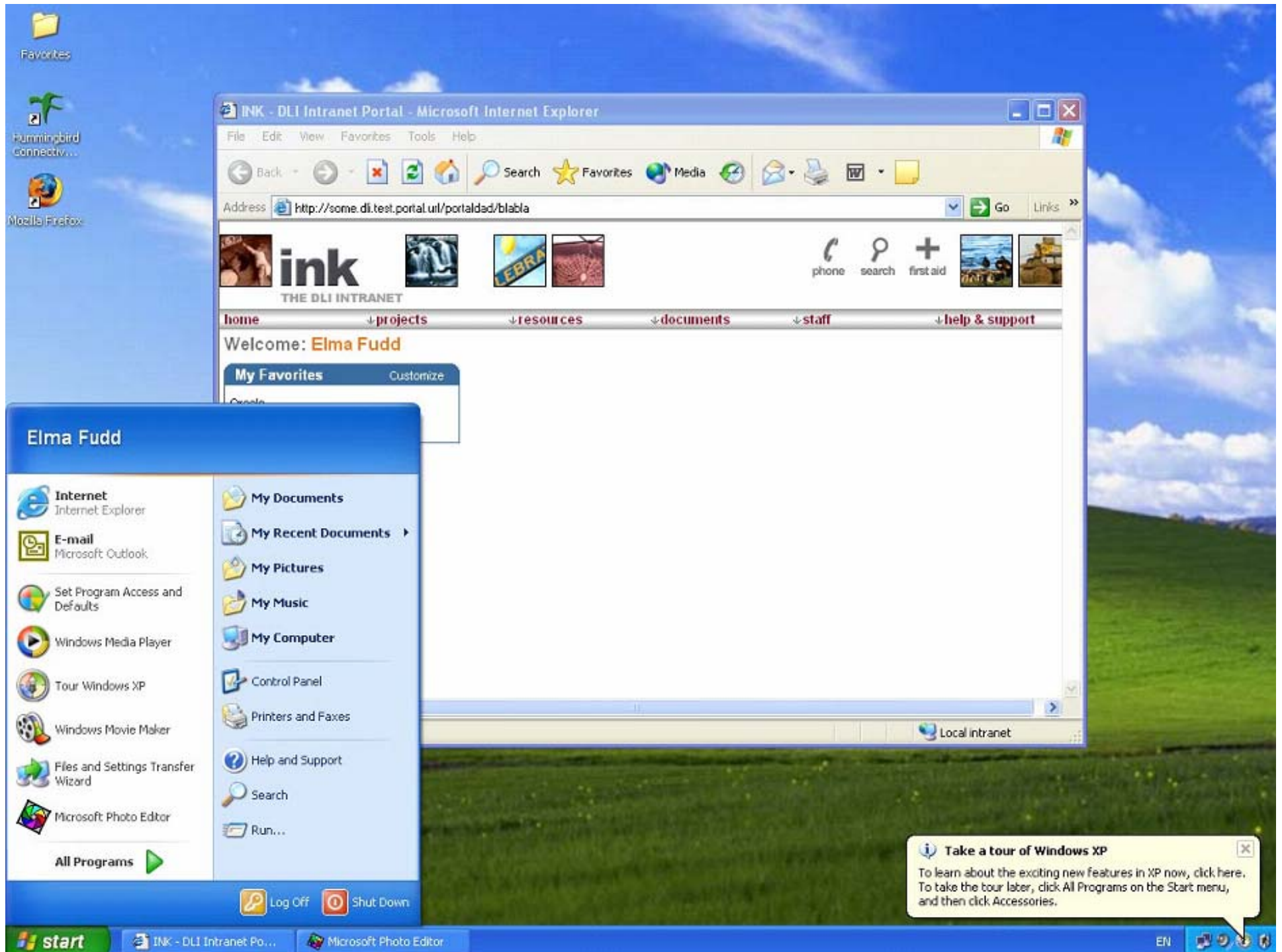
- The System
- The Wishlist

Why

- Limit User Accounts
- Personalisation
- Seamless Login

Who, What & Why?

- Synchronise core User Data
AD to OID
- Groups? – undecided
- Synchronise selected User Data
back OID to AD
- Customised Self Maintenance
of selected User Data
- Delegated Authentication
to AD
- WNA
– Windows Native Authentication
(auto login via IE)





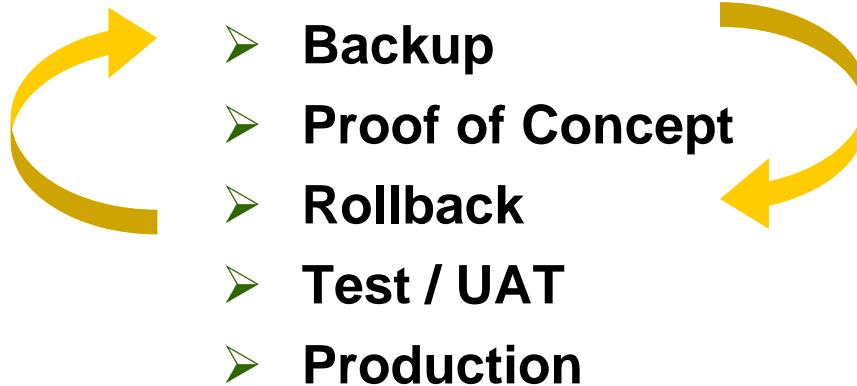
The Plan, The Path

Planning & Considerations

- Approach
- Co-Operation
- Environment Issues



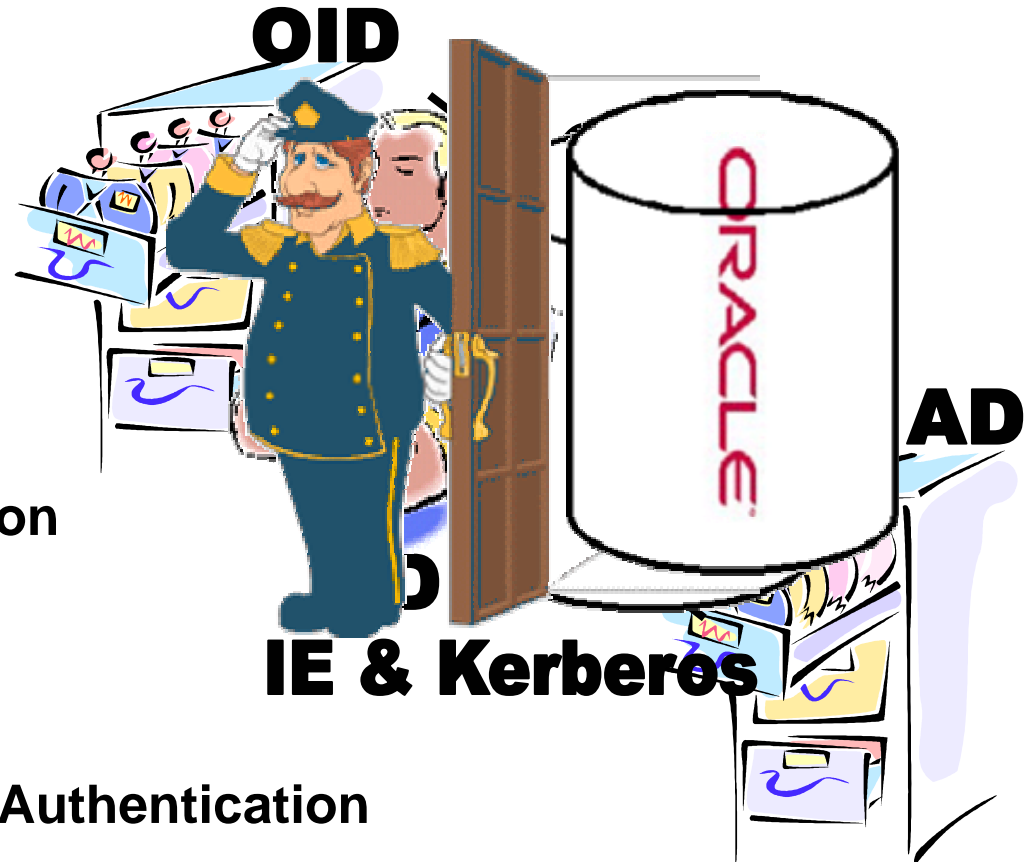
DLI Path



How to Get There

Implementation Phases

- Synchronisation
- Delegated Authentication
- WNA – Window Native Authentication





Realms & DITs

Basis of Synchronisation

Real World

Active Directory
Users and Computers



Domain = ~~WDLI.wa.gov.au~~
Users = ~~DLI Users container~~

Oracle Internet Directory
Oracle Directory Manager



Realm = dc=dli,dc=wa,dc=gov,dc=au
Users = Users container

AD users to be in DLI Users
(sub OU under Users)

Real World Domain Mapping Rules

SOURCE : DESTINATION : EDITING RULES

OU=DLI Users,DC=WDLI,DC=wa,DC=gov,DC=au:ou=DLI Users,cn=Users,dc=dli,dc=wa,dc=gov,dc=au

www.sagecomputing.com.au



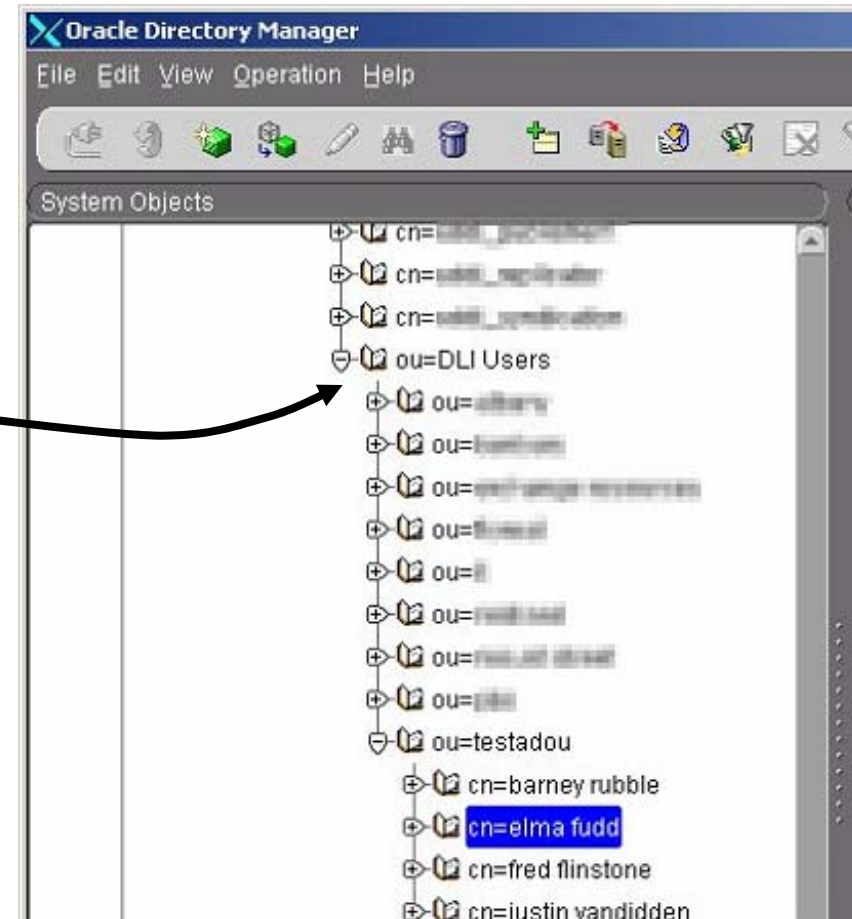
Realms & DITs...

Why the Differences?

- **Installation History**
- **Organisational Structure**
- **Implementation Decision**

Why Should They Match?

- **Simplified Mappings**
- **Performance**





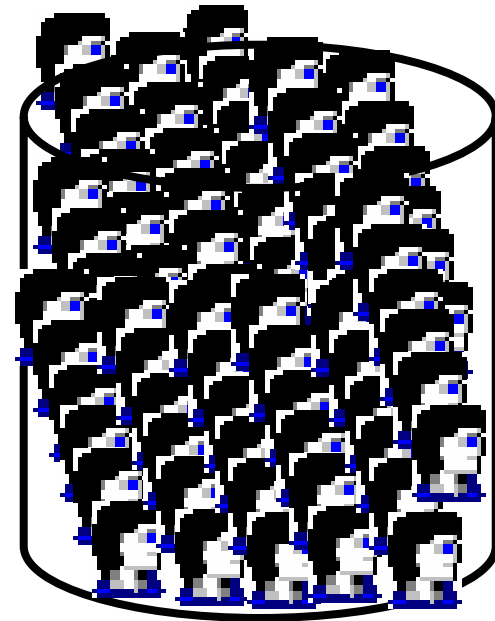
Realms & DITs...

Options

- Re-Install
- Change / Add OLD Realm

Our Experience

- Re-Install Not Practical
- Change Default Realm
- Outcome
 - Consider Carefully
 - Mapping Rules can Compensate



10s to 100s
Thousands +



Synchronisation

Probably Most Work

- 1. Design & Create Mapping Rules File**
- 2. Install Patch (if 9.0.4.1.)**
- 3. Create New OLD OU under Users**
- 4. Create SSO AD Account**
- 5. Change OLD Users ACI/s (Access Control)**
- 6. Implement Synchronisation Profile**
- 7. Bootstrap (Initial Load)**
- 8. Enable Profile**
- 9. Test.. Play.. Test.. Play.. Play.. Test.. Play.. Test**



Delegated Authentication

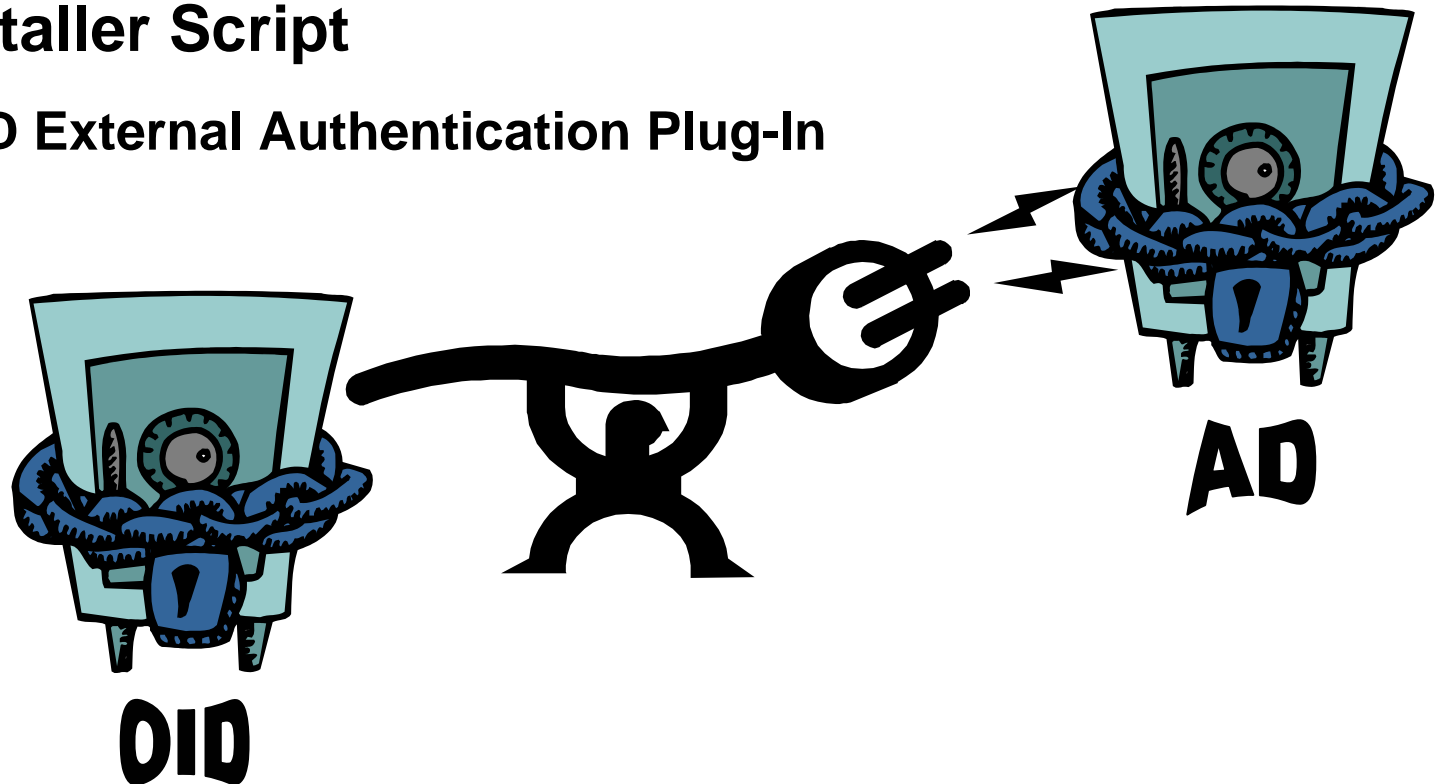
Simple Implementation

1. Install Patch

2. Run Installer Script

➤ OID External Authentication Plug-In

3. Test

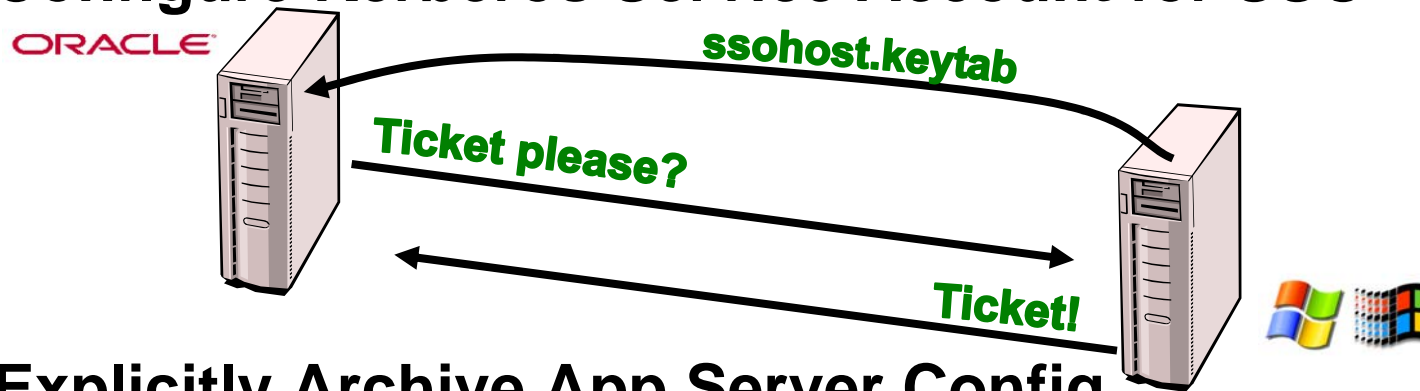




WNA (Windows Native Authentication)

Probably Most Trouble

1. Configure Kerberos Service Account for SSO



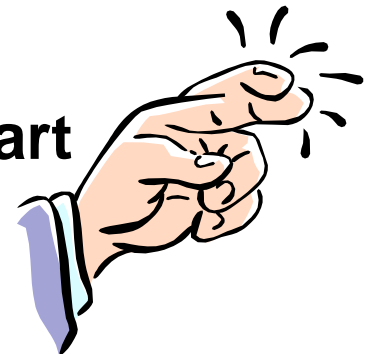
2. Explicitly Archive App Server Config

3. Configure SSO to use Sun JAAS Login Module

4. Configure SSO as a Secured Application

5. Update OPMN (Process Manager), and Restart

6. Done? => Not Quite





WNA (Windows Native Authentication)...

7. Configure IE Browser to use WNA

8. Test

9. Done? => Not Quite



10. Configure Non-AD Users

11. Test.. Test.. Test..

➤ the Probable ⇔ the Impossible

12. Done? ...



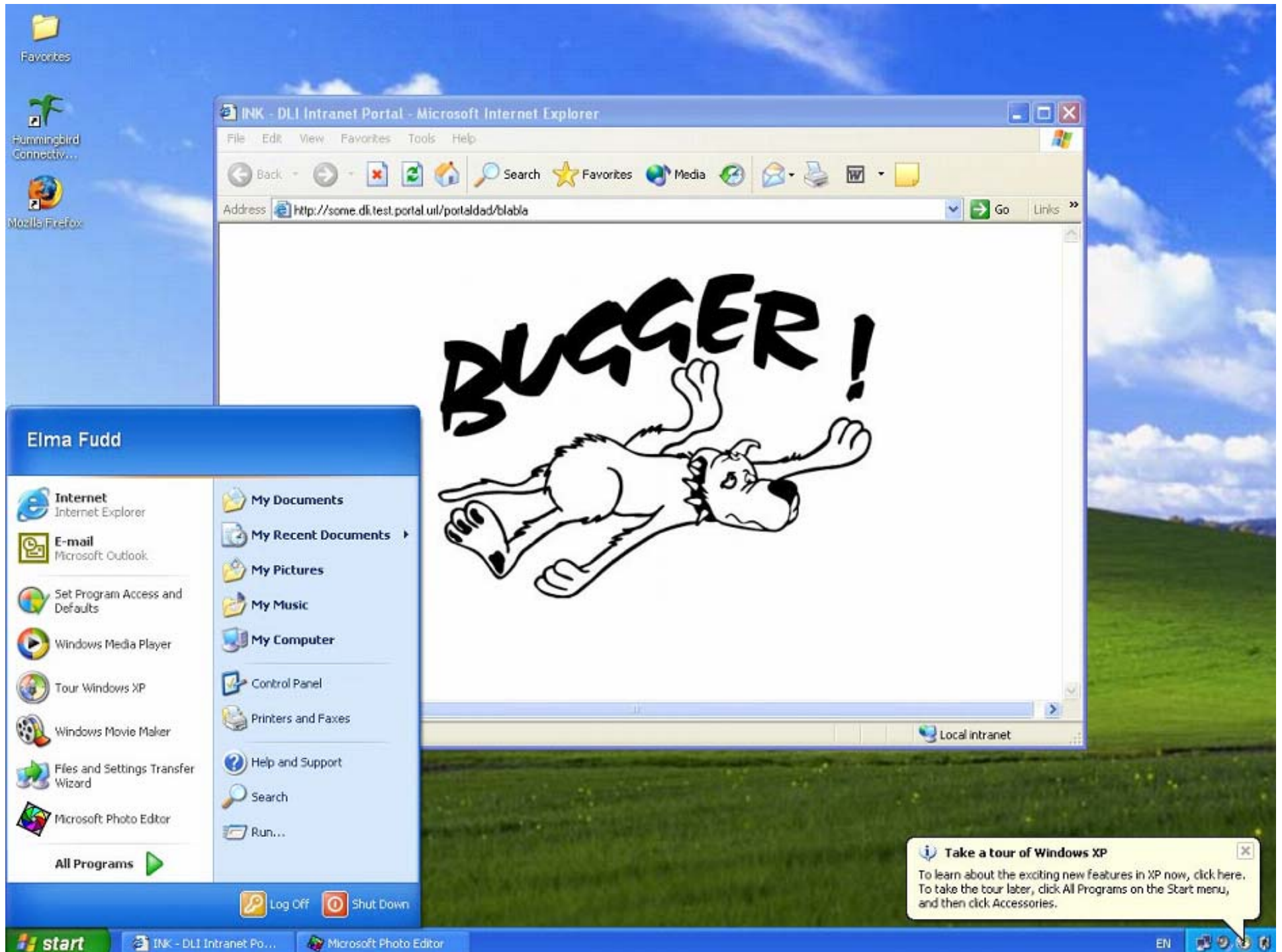
Job Done!

“Celebrate”



Right?

www.sagecomputing.com.au





Lessons & Traps

Follow Instructions to the Letter

Play it Safe – Don't Assume

- Case Sensitivity
- Naming



Customise the Default Mappings File

Delegated Authentication – Yes or No?

Consequences

- Proprietary MS Hash Problem
- Reverseable Password (Plain Text)



Lessons & Traps...

App Server Configuration File Edits

Absolute Accuracy Required

- Syntax
- Case Sensitivity
- Naming
- Avoid Comments

Existing Containers

Enterprise Manager & File Edits

Edit Live Files

Risks – either way

When (not if) things go Terribly Wrong!

- Restore from Archived Config or Full System Rollback





Lessons & Traps...

**Research, Review
& Contrast Resource Documentation**

Look for Dependencies

Metalink Troubleshoot Guides

- **OLD DIP Troubleshooting**
- **WNA Troubleshooting**



ORACLE®



Multiple Technologies



Hints

Do it in DEV

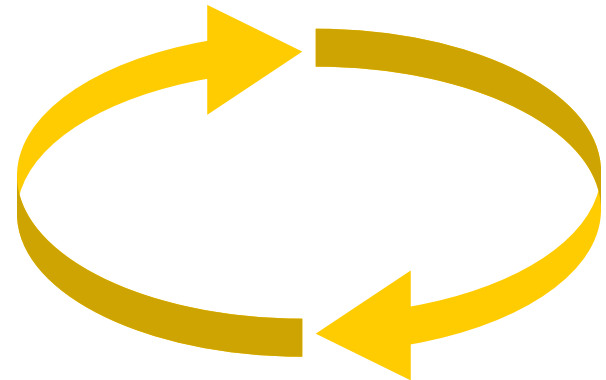
This 'is' a Development Process

Primary Resource Documentation

- OBE – Oracle by Example Tutorials
- Metalink “How To” Notes

Backup, Play / Test and Rollback

- Test after each Stage
- Test for the Unexpected
- Test just to see what happens



Hints...

Try to Gain an Understanding

- Resist Blindly following instructions

Document Accurately

- If you haven't tried it
Then don't document it

Virtual Server Implementation?

- DLI – Virtual LAN mimicking PROD





Current Status DLI



Department of Land Information
Government of Western Australia

Proof of Concept

- Rolled back and Reproduced

Progression

- Reproduce (unassisted) In-House
- Looking toward UAT



We Did Do It!
errr Didn't We?



Current Status DLI...

What's In?

- One Way User Synchronisation
 - with Bootstrap
- Delegated Authentication
- WNA (Windows Native Authentication)





Current Status DLI...

What's Out?

- **Group Data Synchronisation**
- **Bi-Directional Synchronisation
(OID to AD)**
- **Auto Login to Partner/External Apps**
- **Filtering**
- **SSL**
- **DAS Customisation
(Selective Self Service Maintenance)**
- **Augmenting Default Mapping Processing**



Primary Notable References

Oracle® Internet Directory Administrator's Guide 10g (9.0.4) Part No. B12118-01, September 2003

Integrating Oracle Internet Directory with Microsoft Active Directory: Import Connector, Oracle OTN OBE Lesson, 2004

How To Setup OID Synchronization with Microsoft Active Directory Quick Start Guide, Oracle Metalink "How To" Note: 267153.1, 09 Dec 2005

How to Configure OID External Authentication Plug-In for Authentication Via Microsoft Active Directory (MS AD), Oracle Metalink "How To" Note: 277382.1, 01 Mar 2006

Configuring Windows Native Authentication for Oracle Application Server 10g (9.0.4) on Unix/Linux, Oracle Metalink "How To" Note: 264666.1, 13 Jan 2005

Windows Native Authentication, Oracle OTN OBE Lesson, 2004



Thank You For Your Attention

Special Thanks to
DLI WA

Peace
&
Harmony



SAGE Computing Services

Customised Oracle Training Workshops and Consulting

www.sagecomputing.com.au

Enquiries@sagecomputing.com.au

www.sagecomputing.com.au